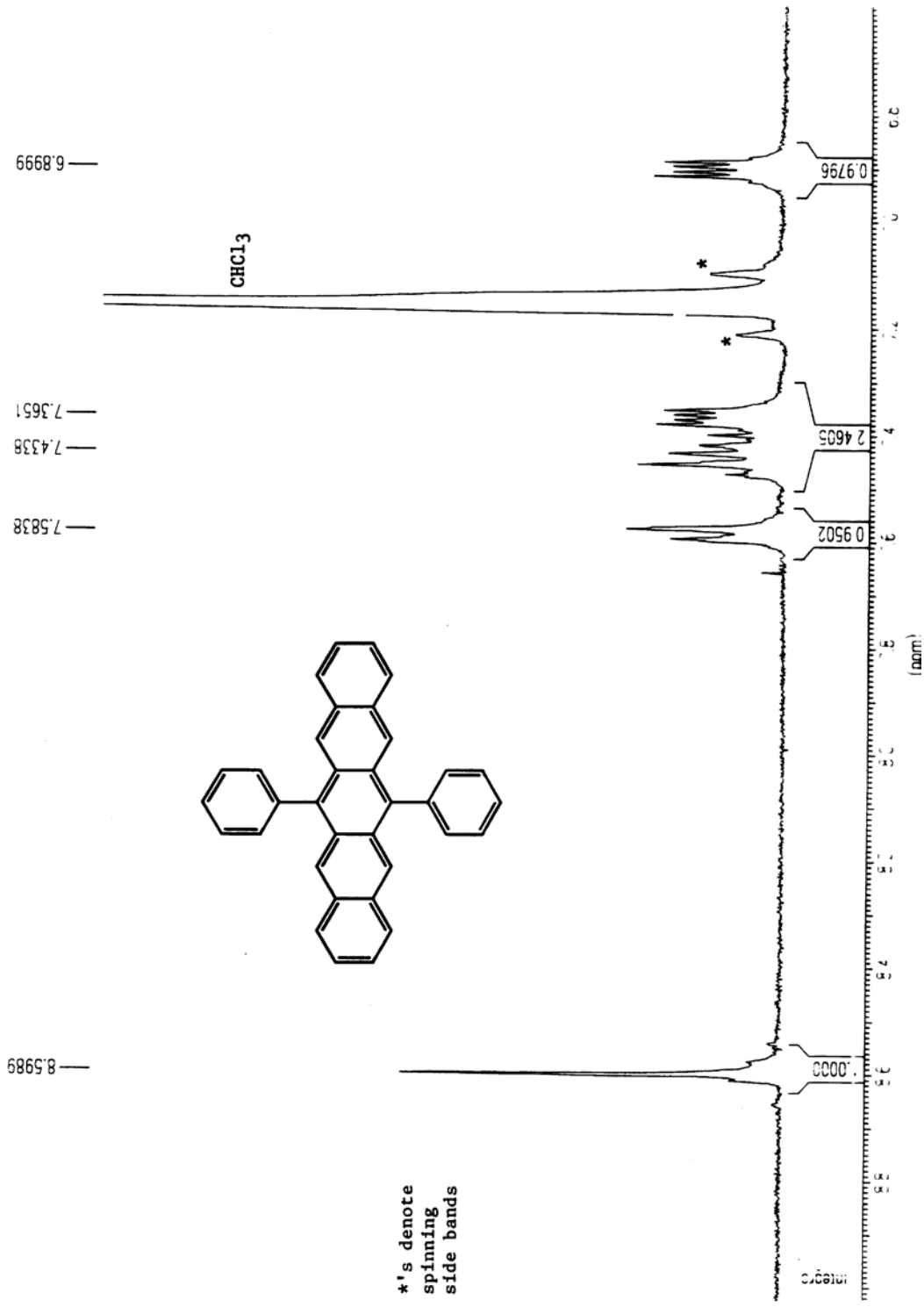
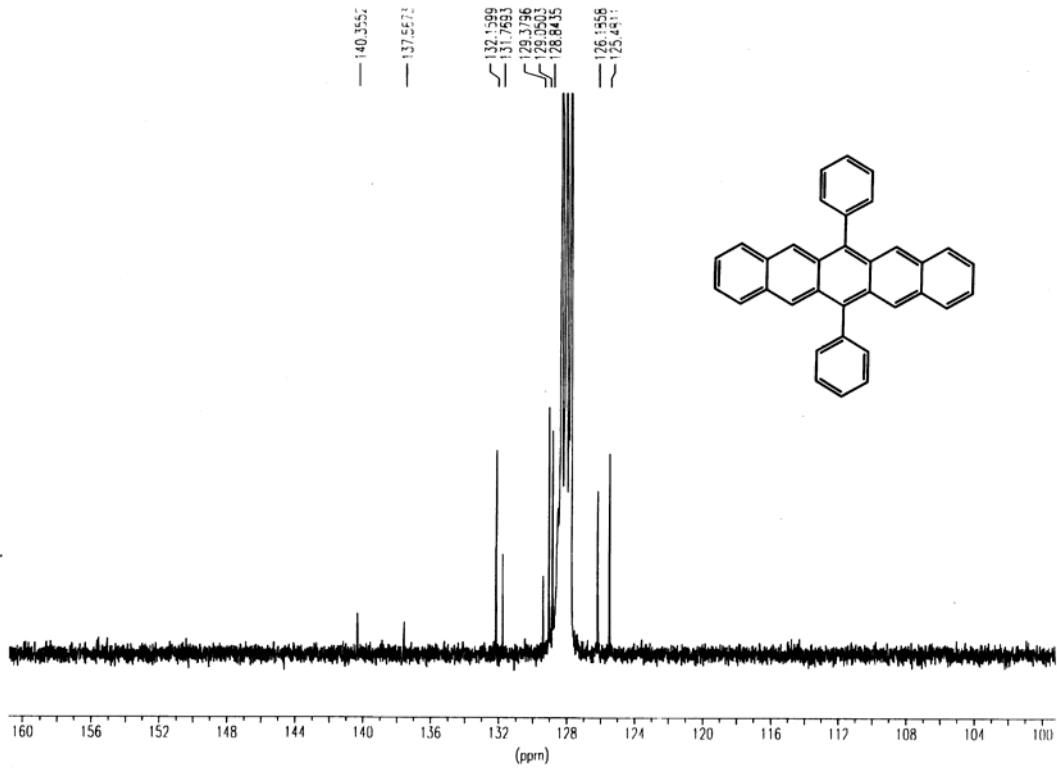


6,13 diphenylpentacene in benzene-d6

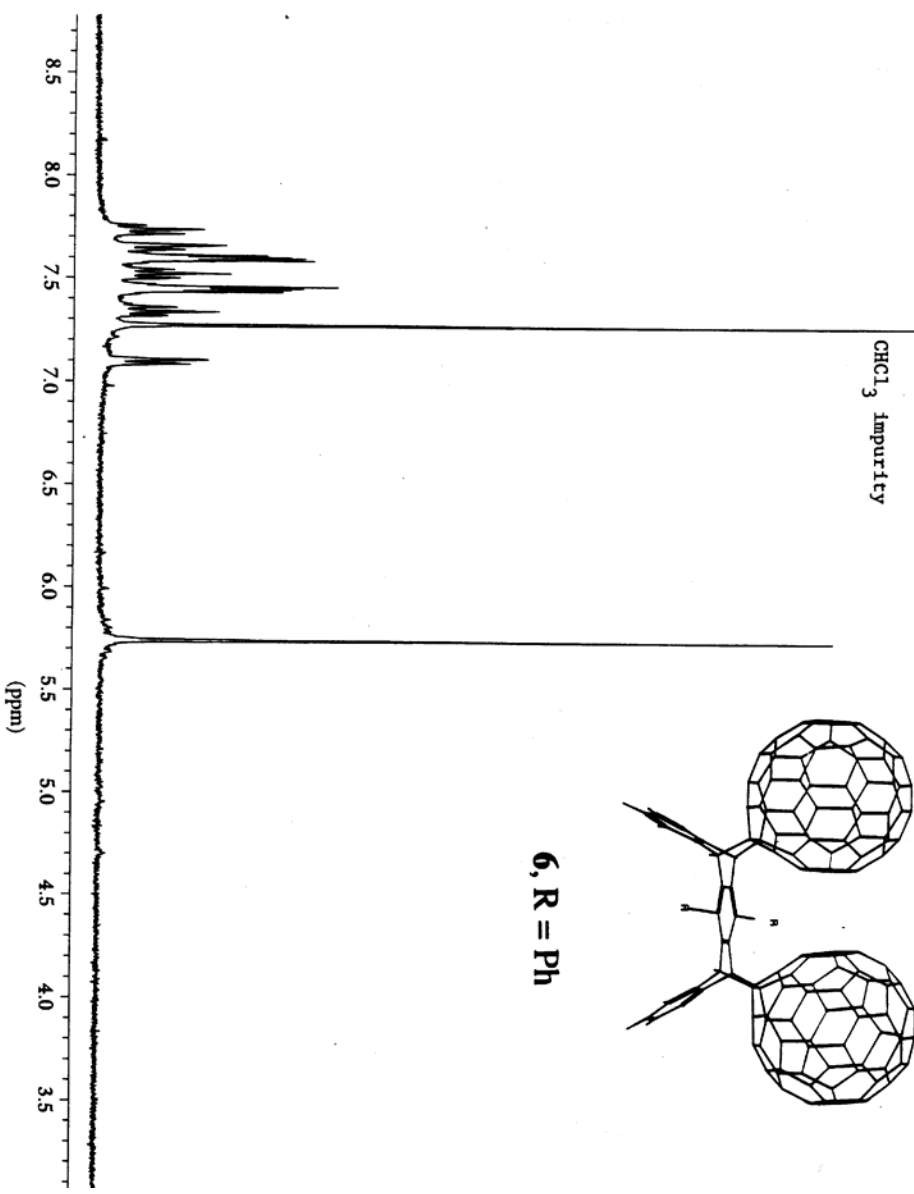
¹H NMR of 6,13-diphenylpentacene



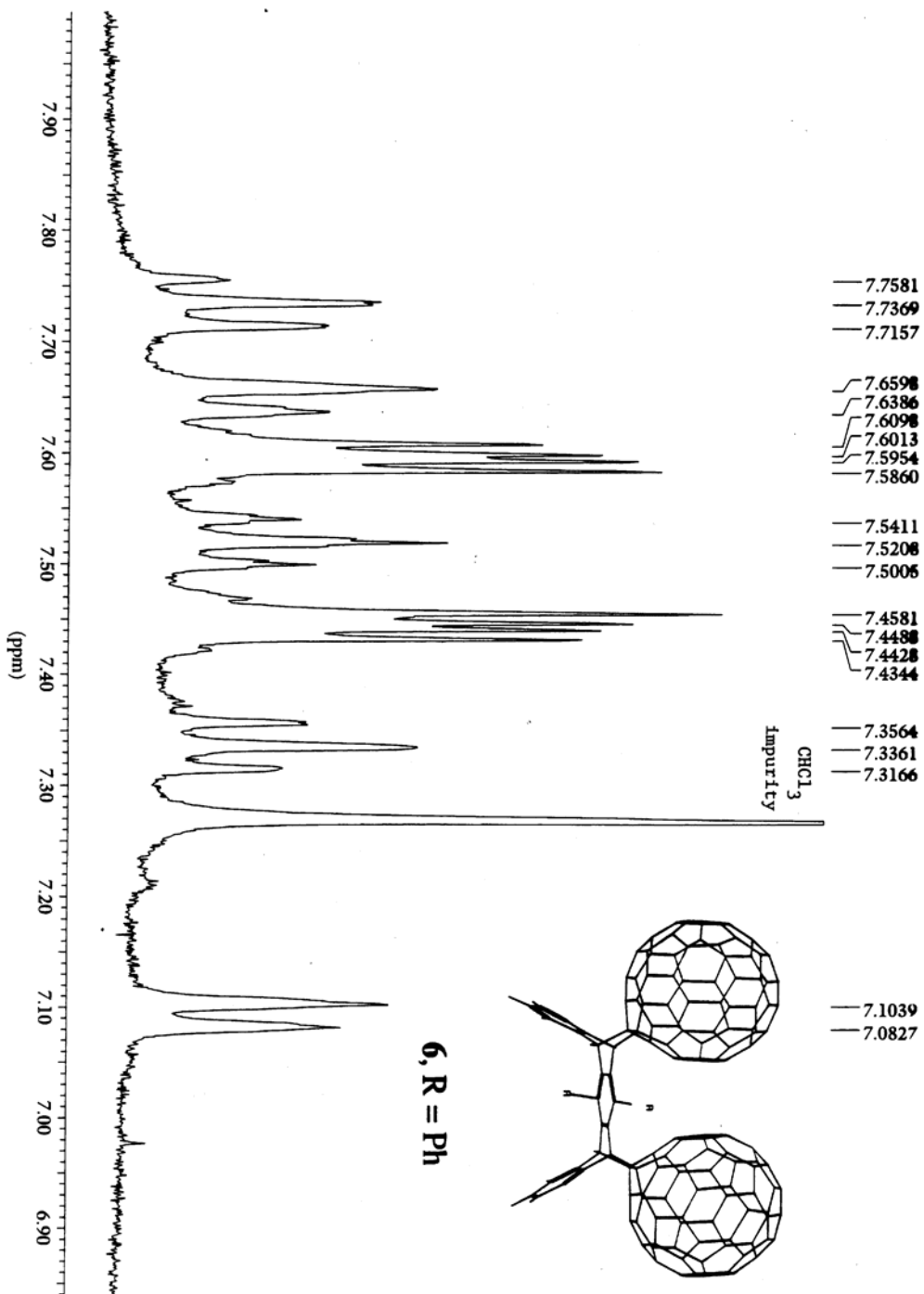
¹³C NMR of 6,13-diphenylpentacene



1802013.001 CLEANED UP BISFULLADD OF DIPHEN PENT

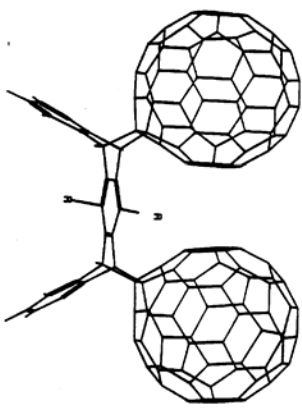


1802013.001 CLEANED UP BISFULLADOL OF DIPHEN PENT

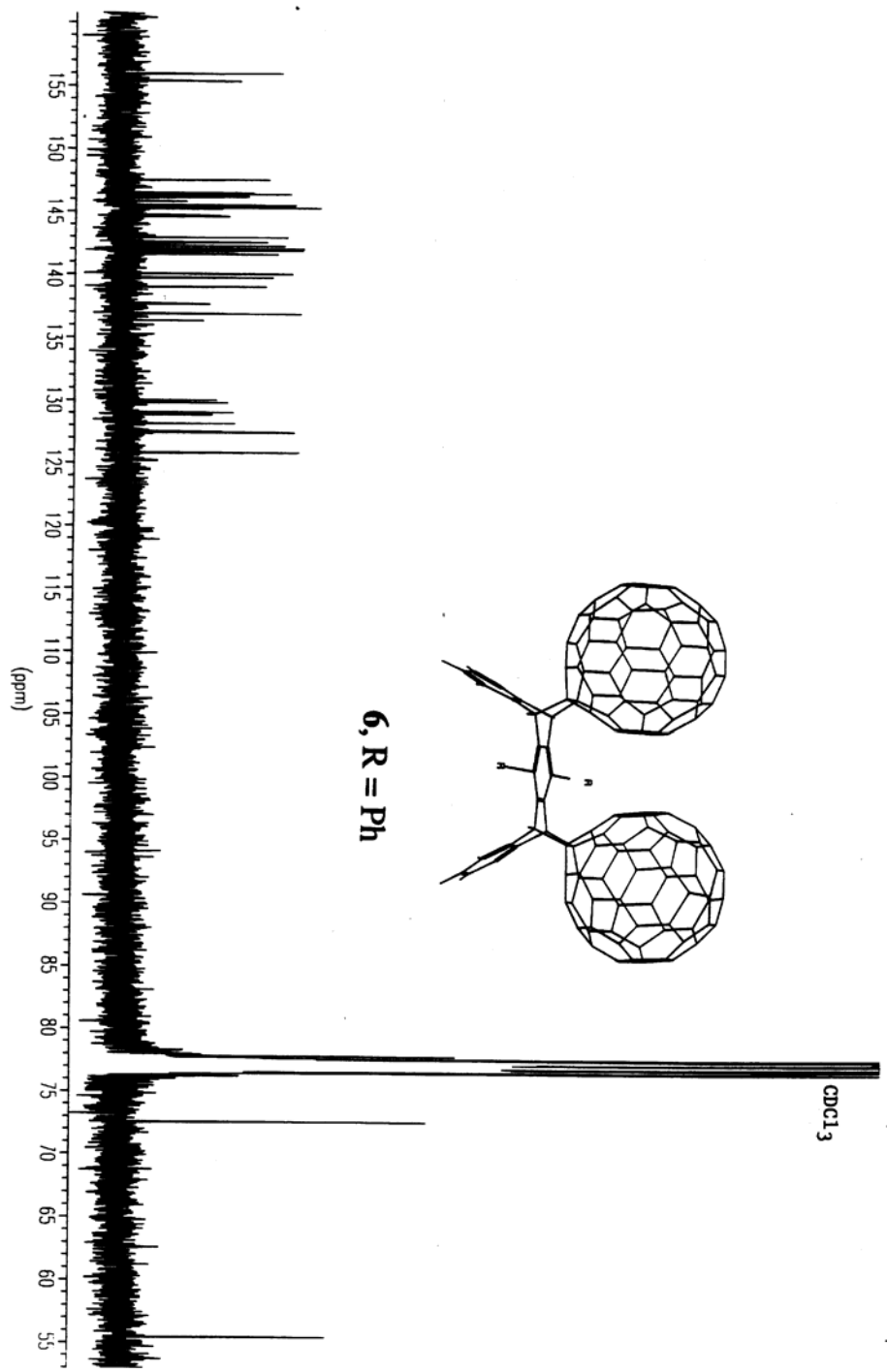


145.4082
 145.3904
 145.3636
 145.3018
 145.2219
 144.6898
 144.6011
 142.9339
 142.5969
 142.5525
 142.4550
 142.2599
 142.0293
 141.9583
 141.9051
 141.6568
 141.5947
 140.0339
 139.7057
 139.0228
 137.6482
 136.8501
 136.3268
 130.0174
 129.8113
 129.0103
 128.8507
 128.1412
 127.4317
 125.7910

13C NMR of 6
 1,3-bis(phenyl)indolene in CDCl₃



6, R = Ph

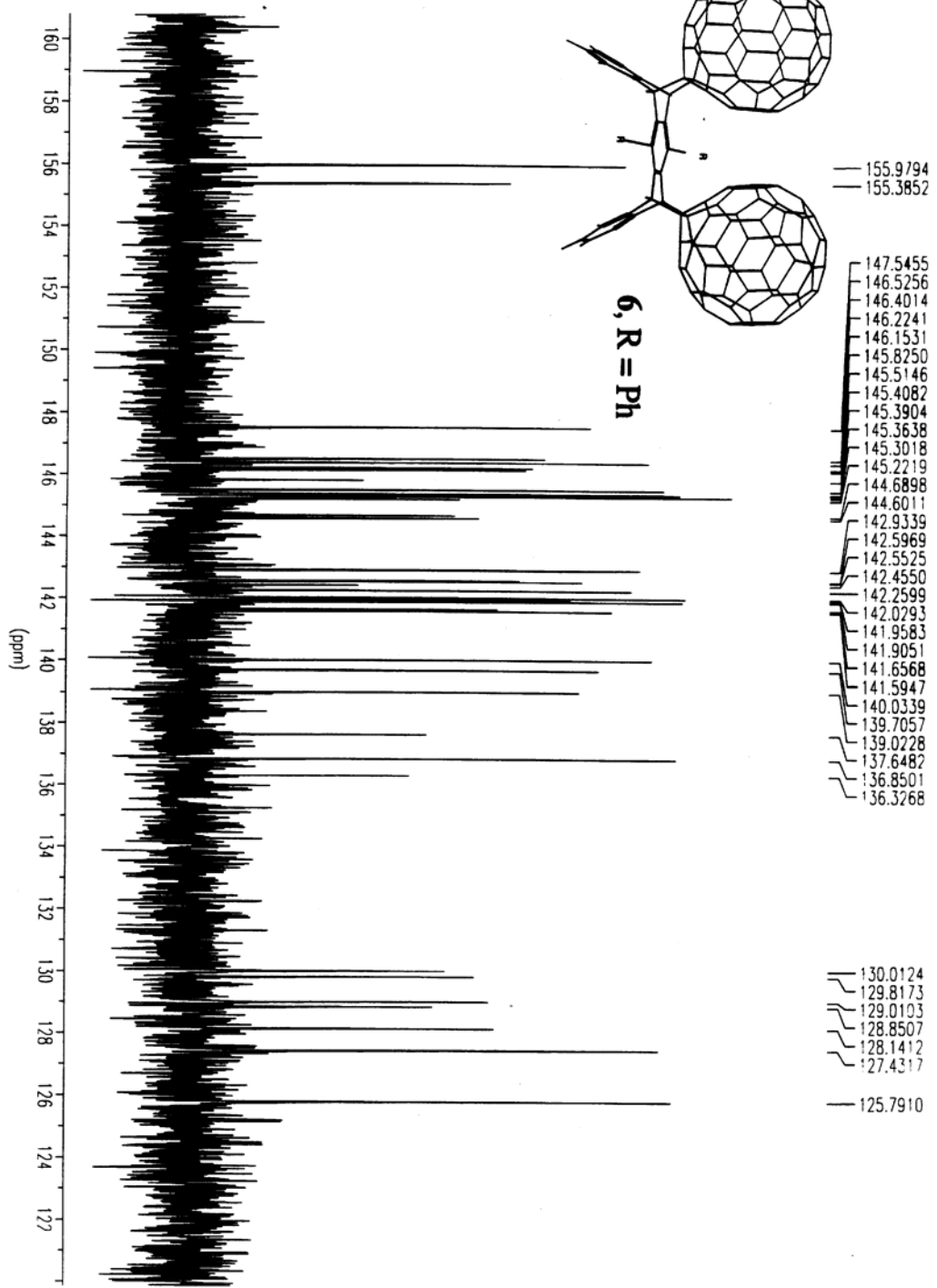
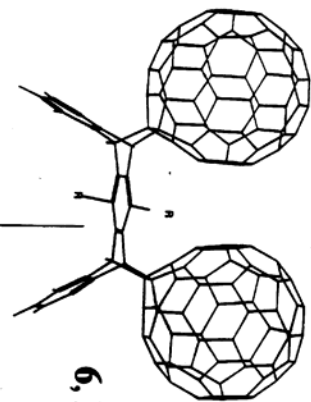


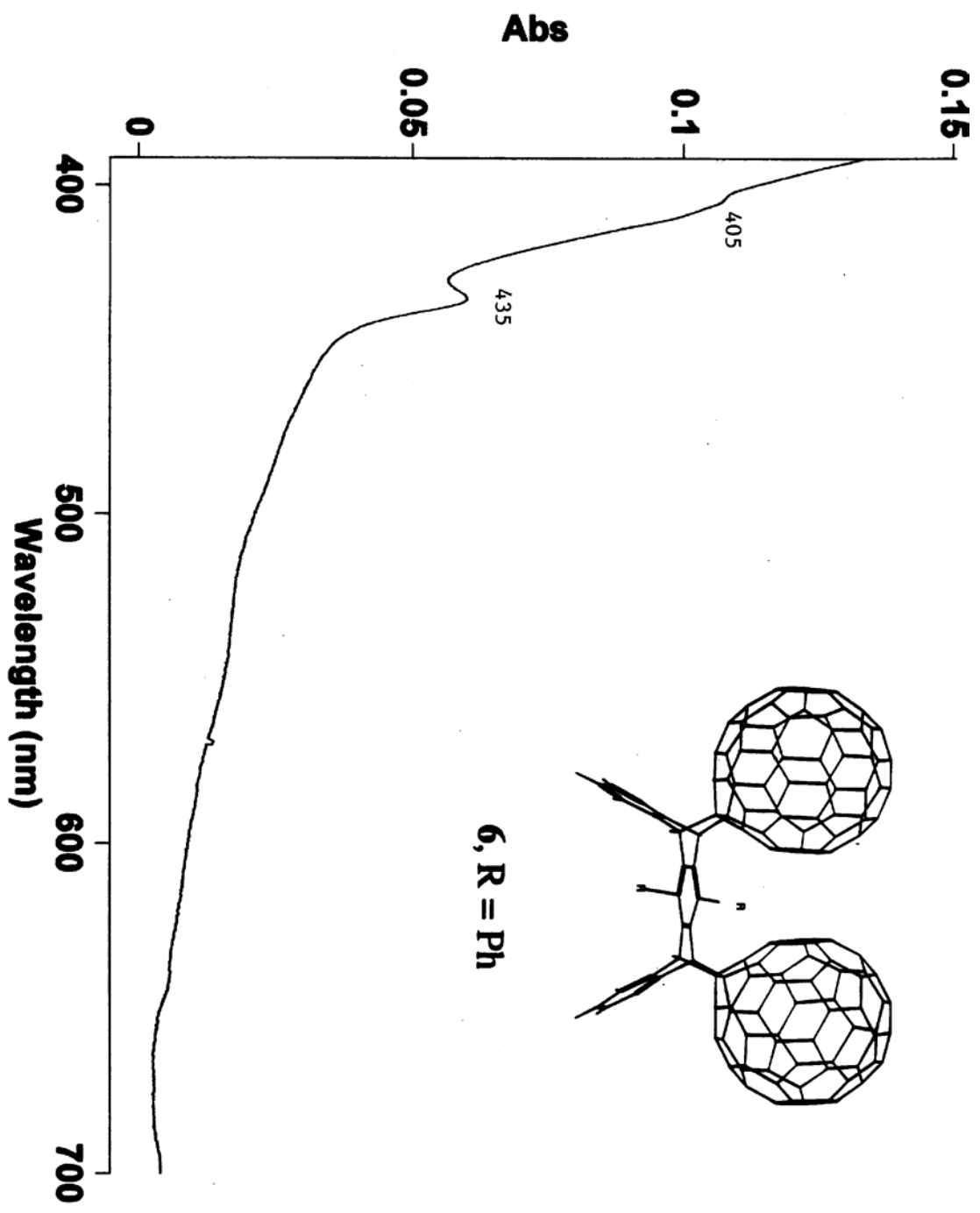
CDCl₃ — 72.5179

— 55.3662

cis-bis[fullerenyl(60)] adduct of 6,13-diphenylpentacene in CDCl₃/CDCl₂

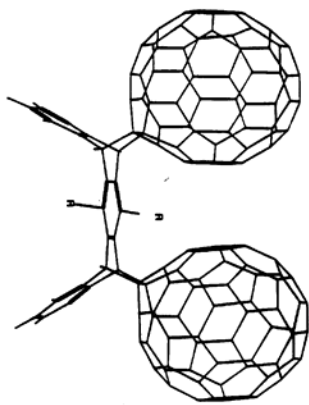
Blow up of ¹³C NMR of 6



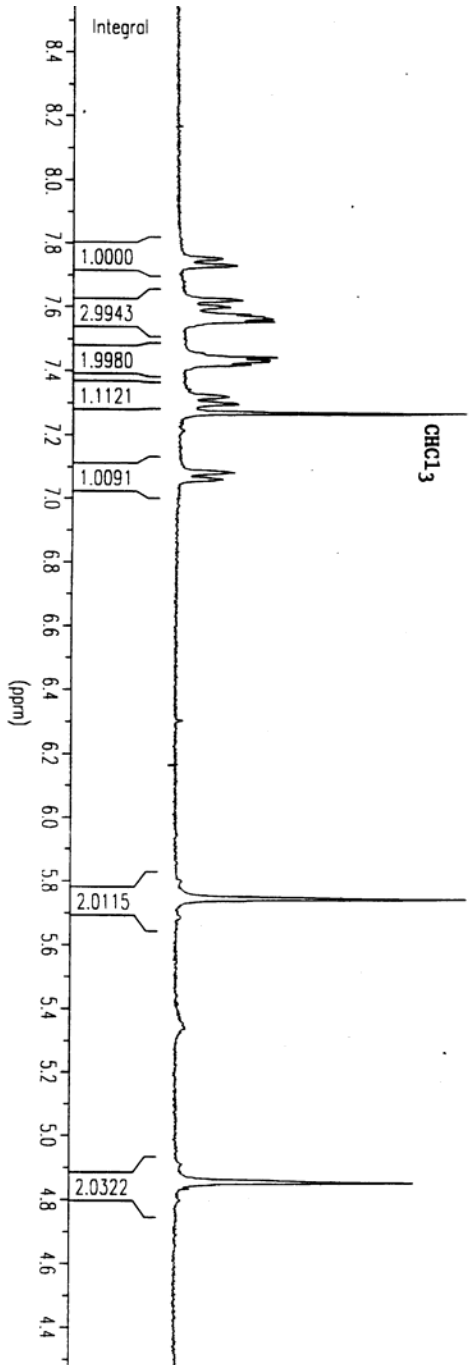


1H NMR (60 MHz, CDCl3) of 7: 7.7394, 7.6106, 7.5666, 7.4318, 7.3081, 7.0717, 5.7455, 4.8549

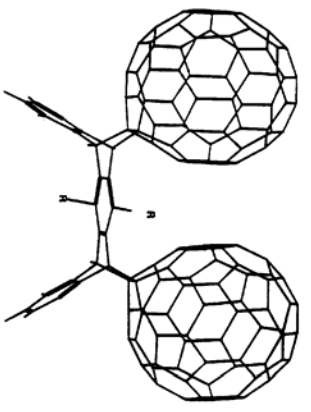
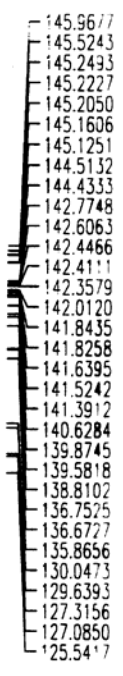
1H NMR for 7



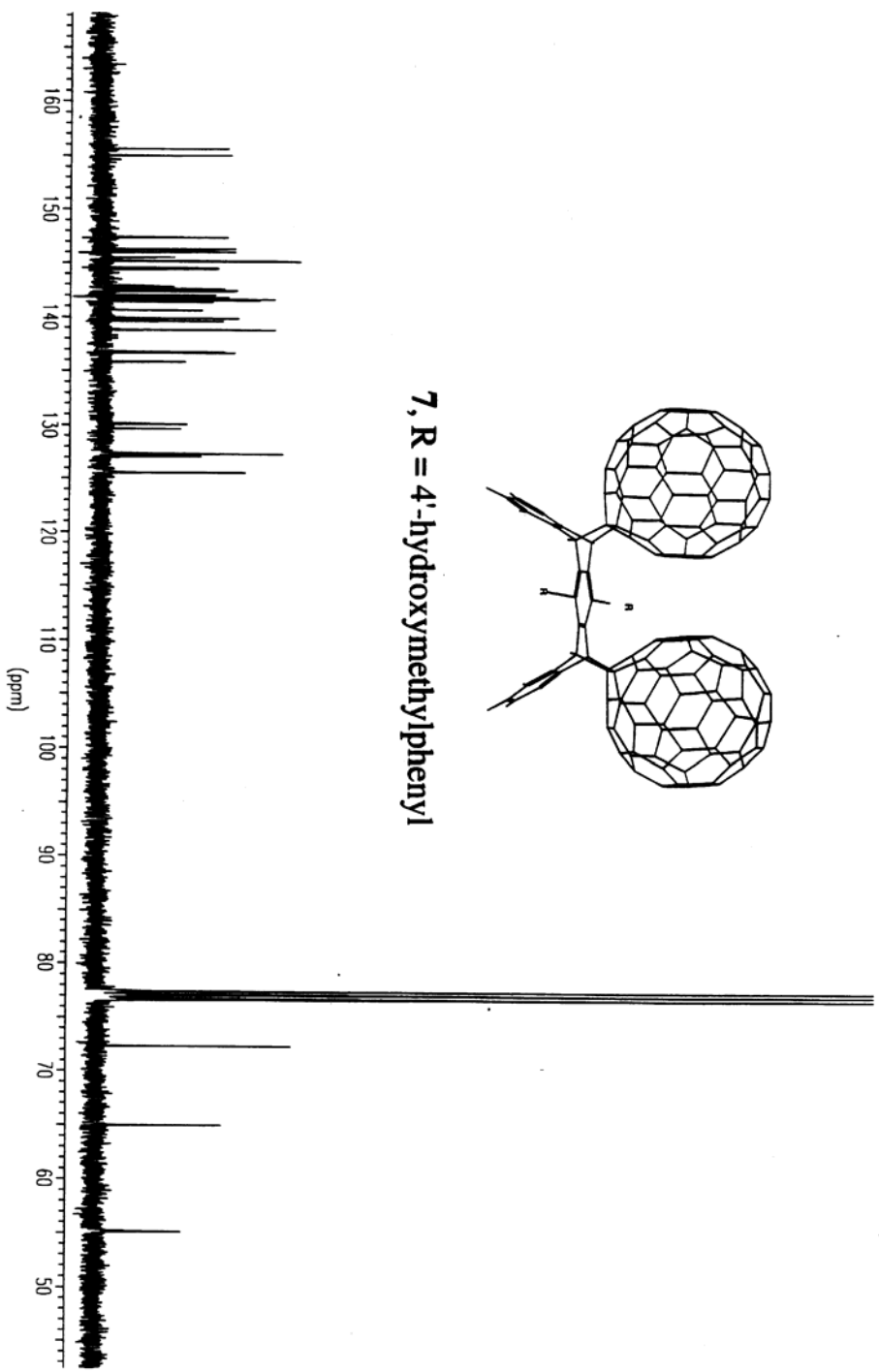
7, R = 4'-hydroxymethylphenyl



CIS distillate(60) adduct of 6,13-d-(4'-hydroxymethylphenyl)pentacene **13C** ~~nmr~~ of 7



7, R = 4'-hydroxymethylphenyl

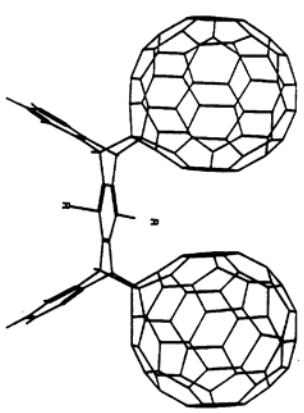


— 72.2549
— 64.9377
— 55.1017

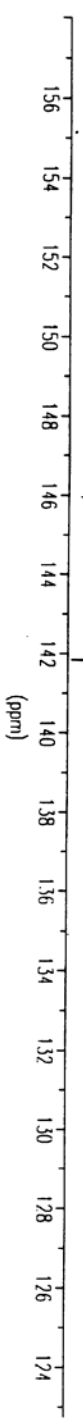
us bustilene[60] adduct of 6,13-di-(4'-hydroxymethylphenyl)perilene

Blow up of ¹³C NMR of 7

- 155.6087
- 155.0144
- 147.3425
- 146.3225
- 146.2427
- 146.0209
- 145.9677
- 145.5243
- 145.2493
- 145.2227
- 145.2050
- 145.1606
- 145.1251
- 144.5132
- 144.4333
- 142.7748
- 142.6063
- 142.4466
- 142.4111
- 142.3579
- 142.0120
- 141.8435
- 141.8258
- 141.6395
- 141.5242
- 141.3912
- 140.6284
- 139.8745
- 139.5818
- 138.8102
- 136.7525
- 136.6727
- 135.8656
- 130.0473
- 129.6393
- 127.3156
- 127.0850
- 125.5417

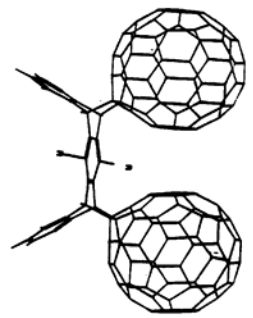


7, R = 4'-hydroxymethylphenyl



cas.usfullerene[60] adduct of 6,13-di-1,4-hydroxy-methylphenylpentadiene **DEPT spectrum of 7**

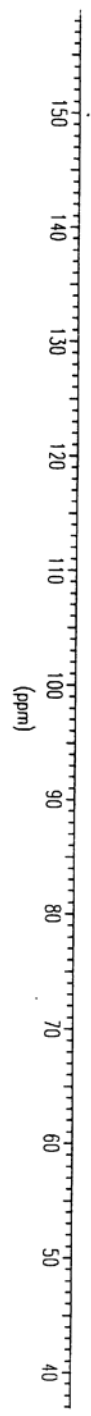
- 130.2685
- 129.8655
- 127.5651
- 127.5212
- 127.3160
- 125.7702



7, R = 4'-hydroxymethylphenyl

— 65.1609

— 55.3366



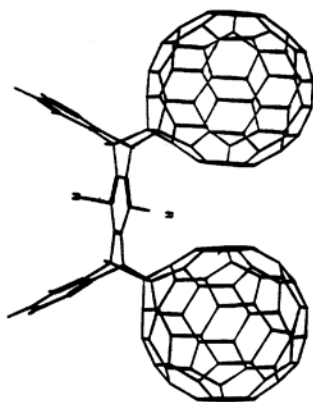
Positive Ion Electrospray MS- 1000-2000 m/z

(4)

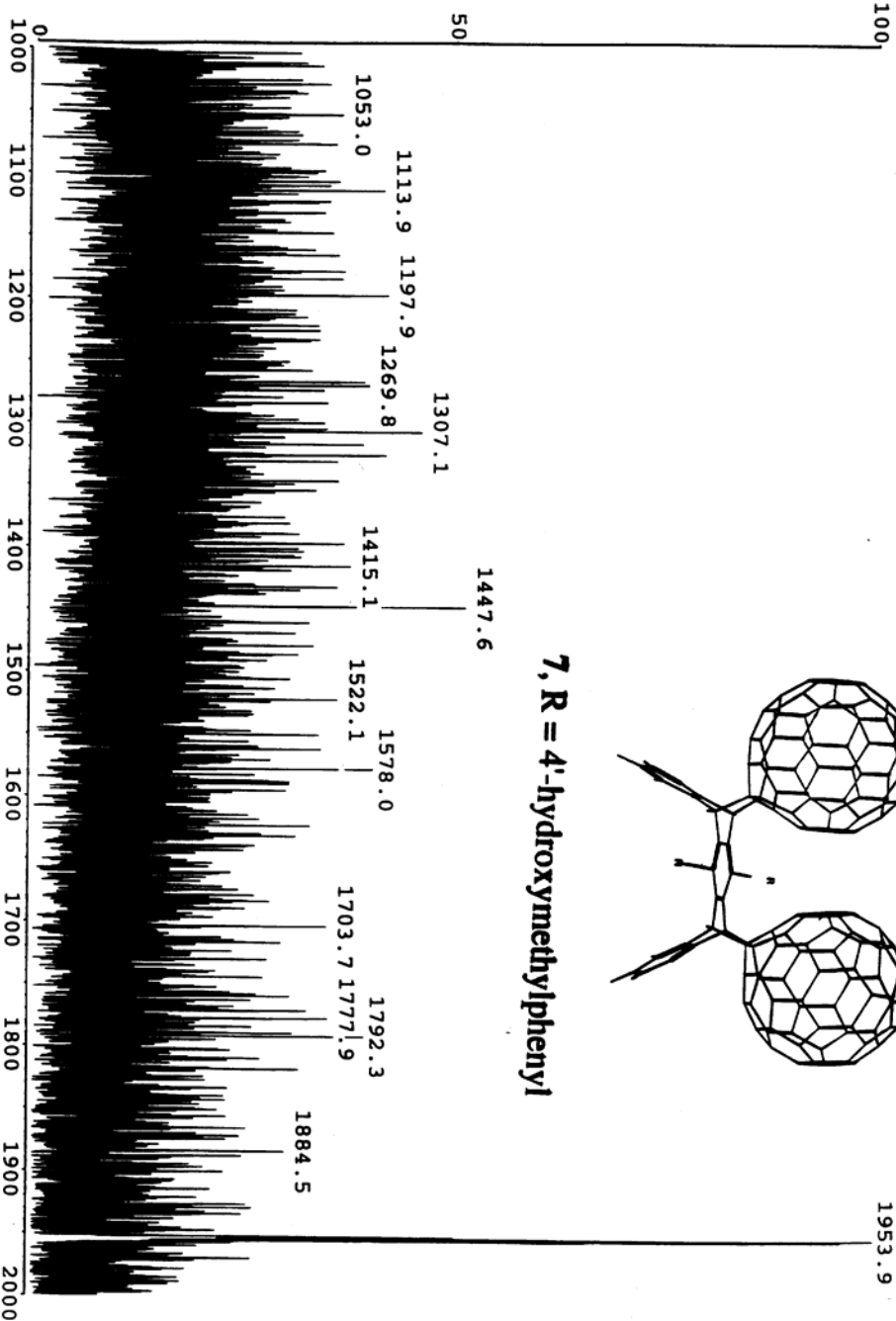
LCQ Instrument Control 12 Jul 2000 03:46 PM

S#: 886 IT: 14.20 ST: 1.11 #A: 30

2.13e+004



7, R = 4'-hydroxymethylphenyl



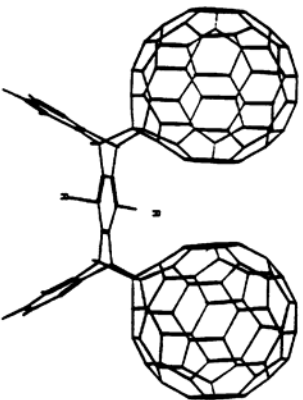
Positive Ion Electrospray MS- 1900-2500 m/z

LCQ Instrument Control

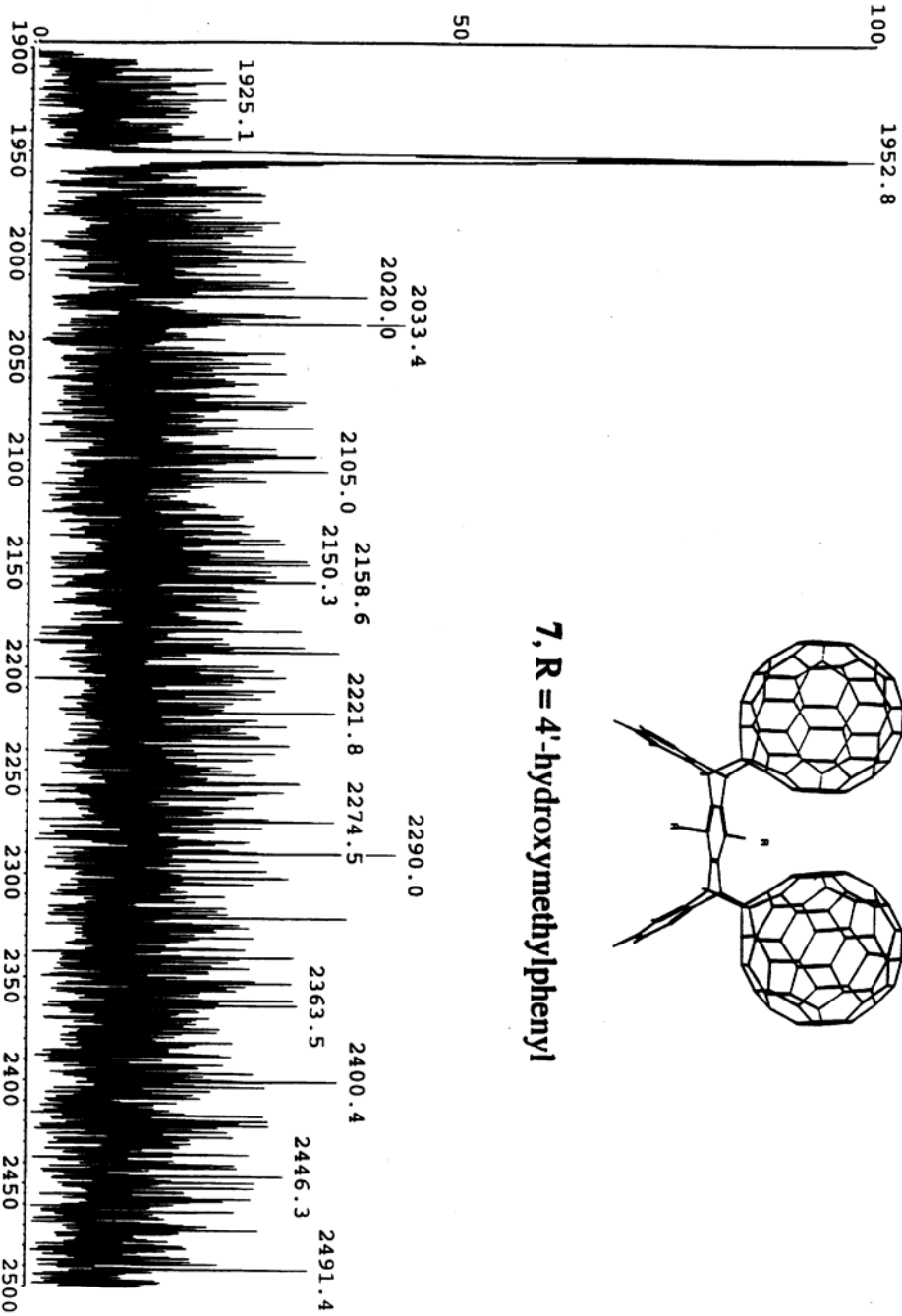
12 Jul 2000 03:44 PM

S#: 744 IT: 56.89 ST: 0.78 #A: 30

NL: 4.01e+003



7, R = 4'-hydroxymethylphenyl

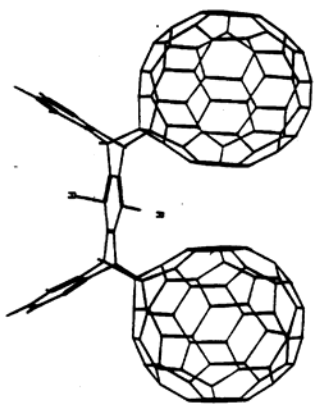
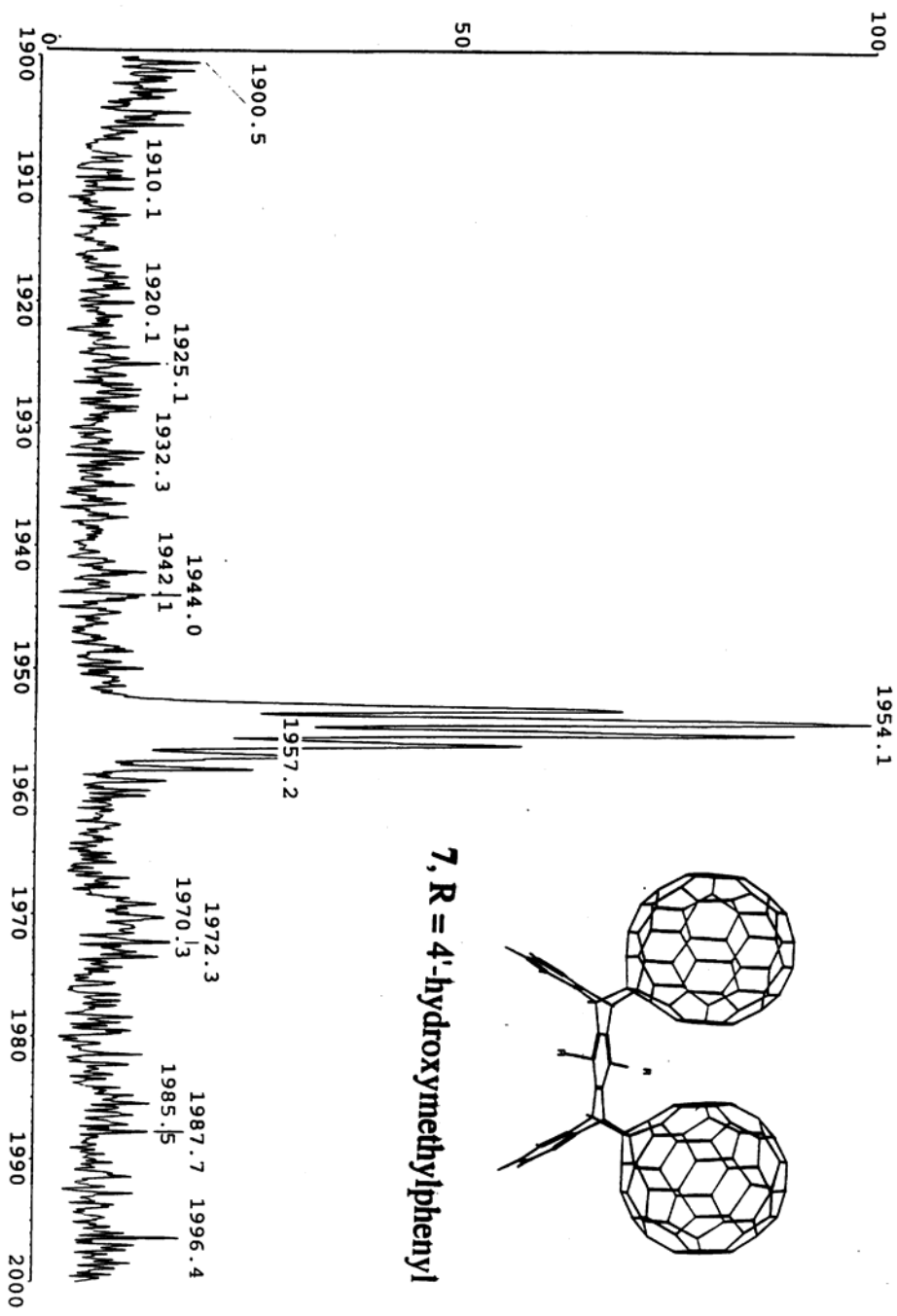


Positive Ion Electrospray MS- Blow up of 1954 region

LCO Instrument Control 12 Jul 2000 03:49 PM

#: 1206 IT: 15.52 ST: 0.28 #A: 30

NL: 6.54e+004



7, R = 4'-hydroxymethylphenyl

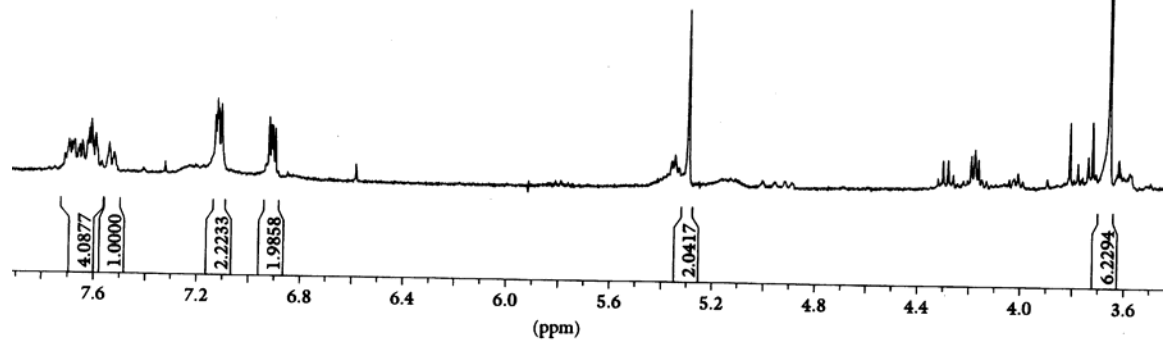
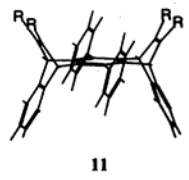
7.6929
7.6518
7.6124
7.5319

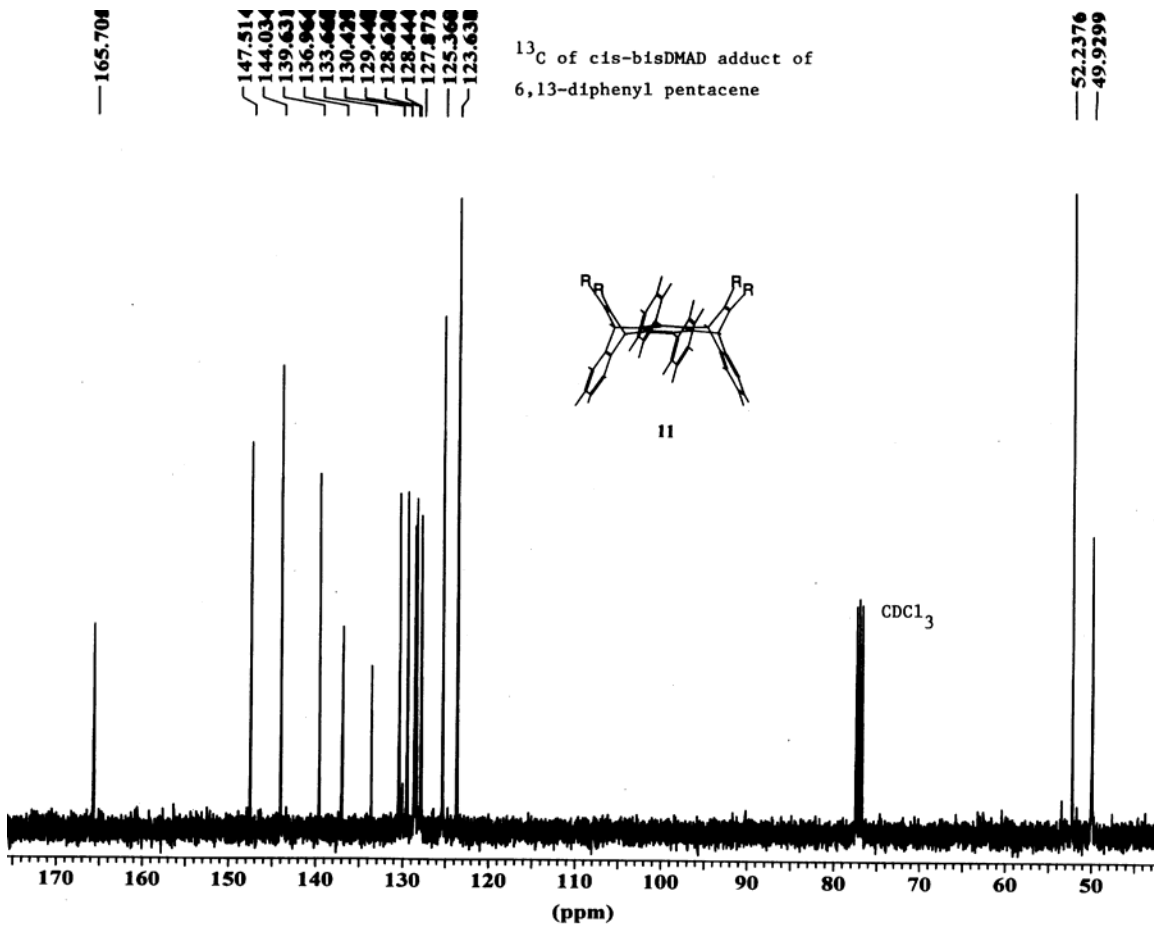
7.1200
6.9103

5.2973

3.6610

¹H NMR of cis-bisDMAD adduct of 6,13-diphenylpentacene

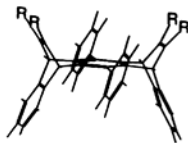




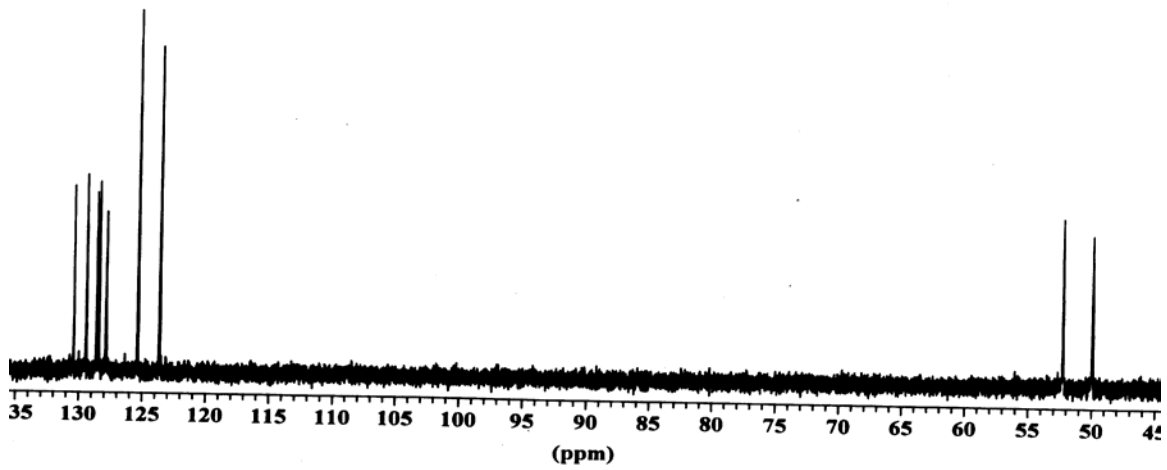
130.43
129.48
128.61
128.44
127.87
— 125.36
— 123.63

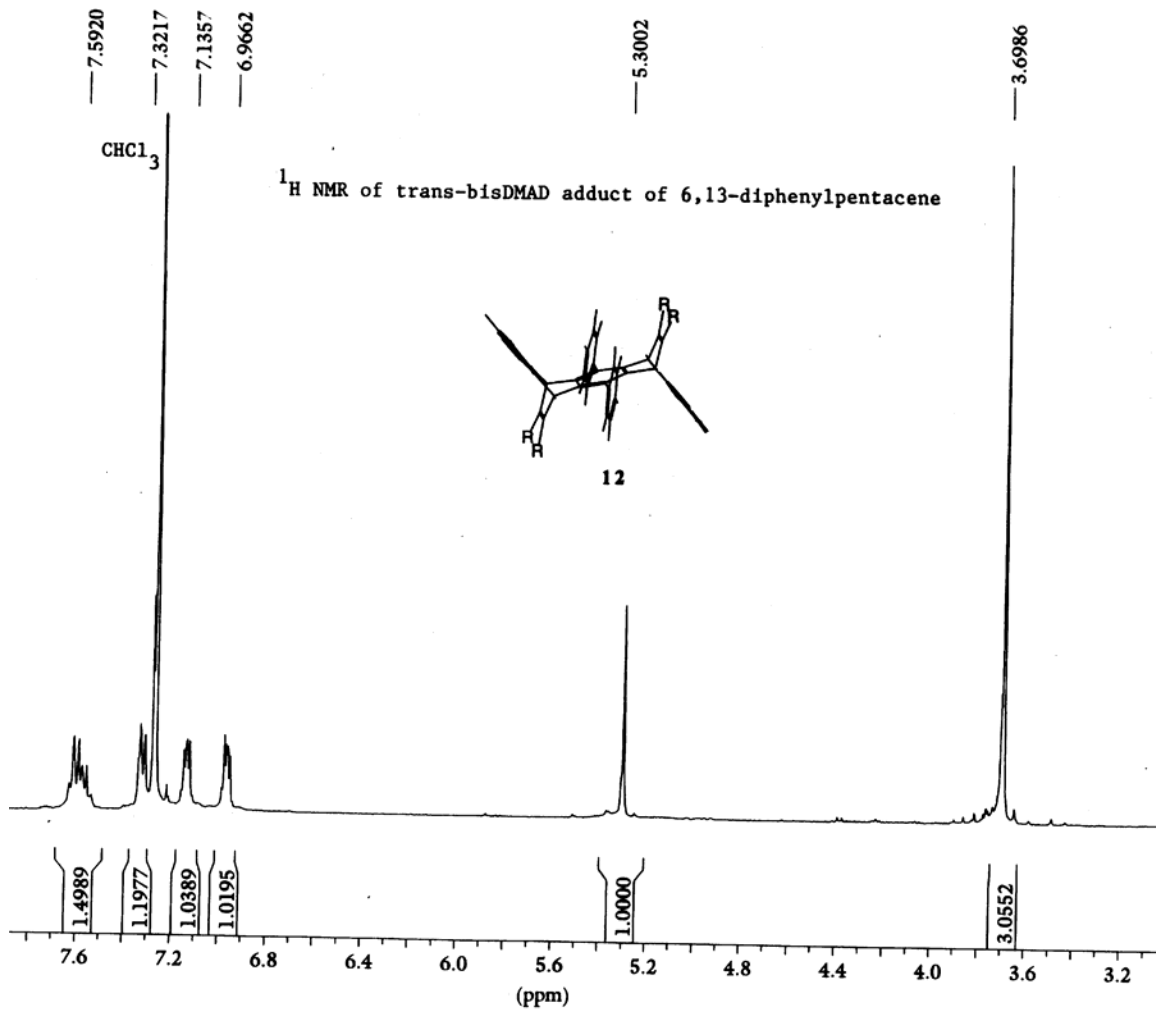
DEPT of *cis*-bisDMAD adduct of
6,13-diphenylpentacene

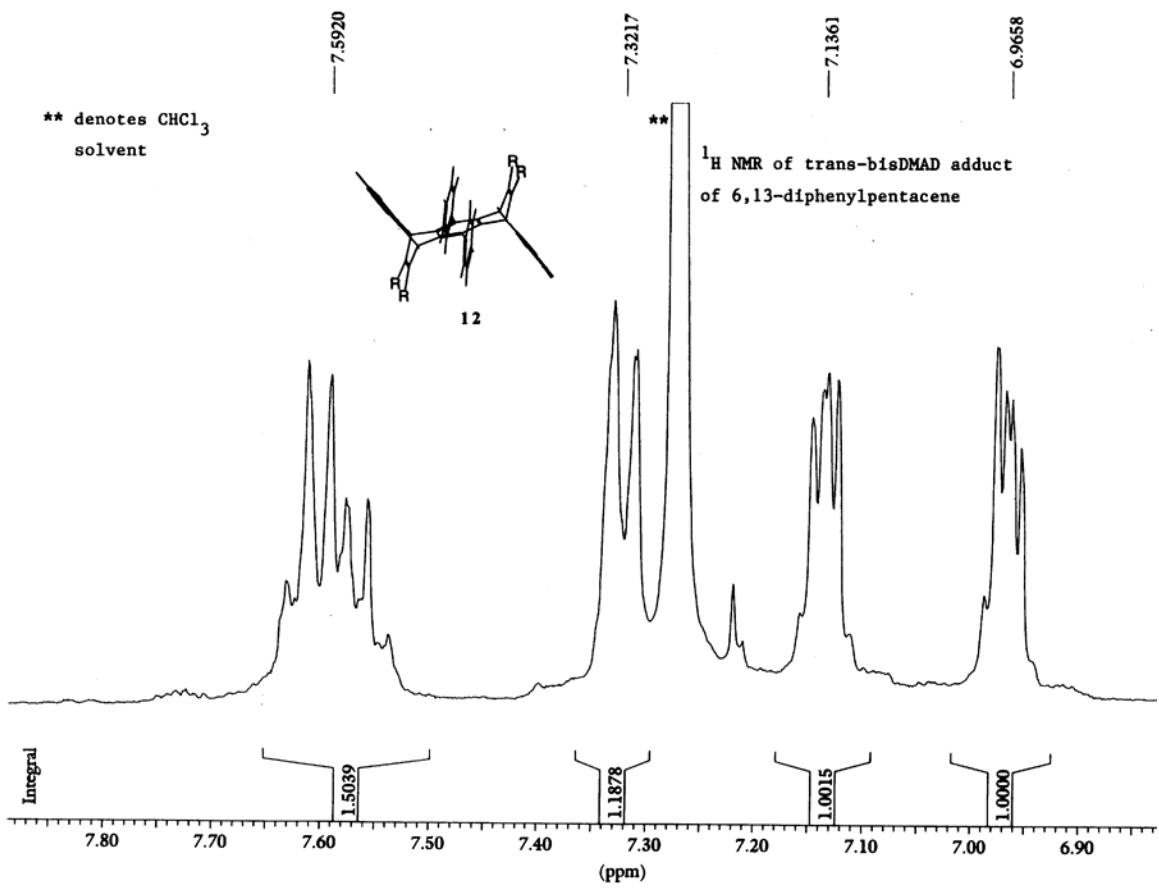
— 52.2303
— 49.9338

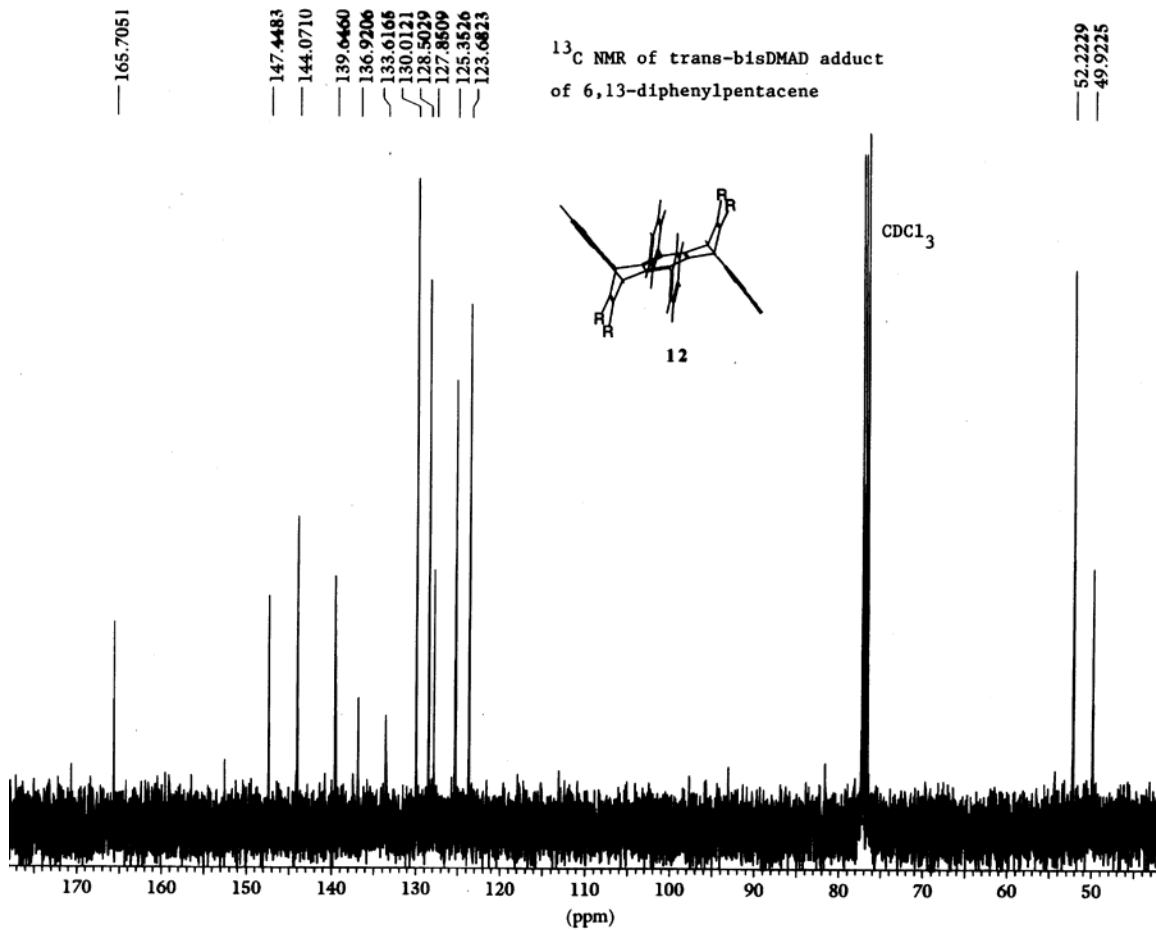


II





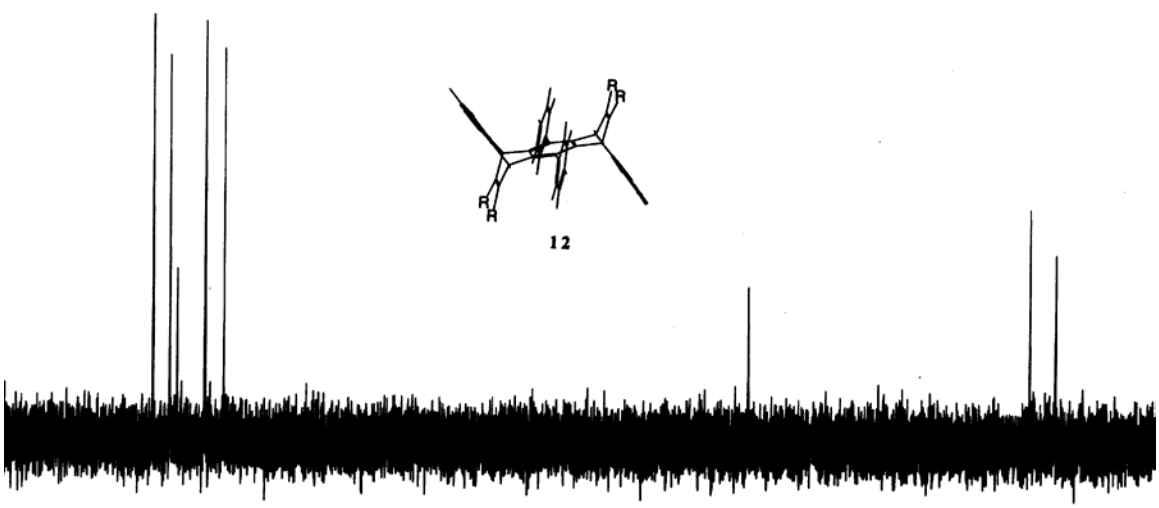




130.0121
128.5029
127.8546
125.3563
123.6859

DEPT of trans-bisDMAD adduct of
6,13-Diphenylpentacene

52.2193
49.9225



140 135 130 125 120 115 110 105 100 95 90 85 80 75 70 65 60 55 50 45
(ppm)